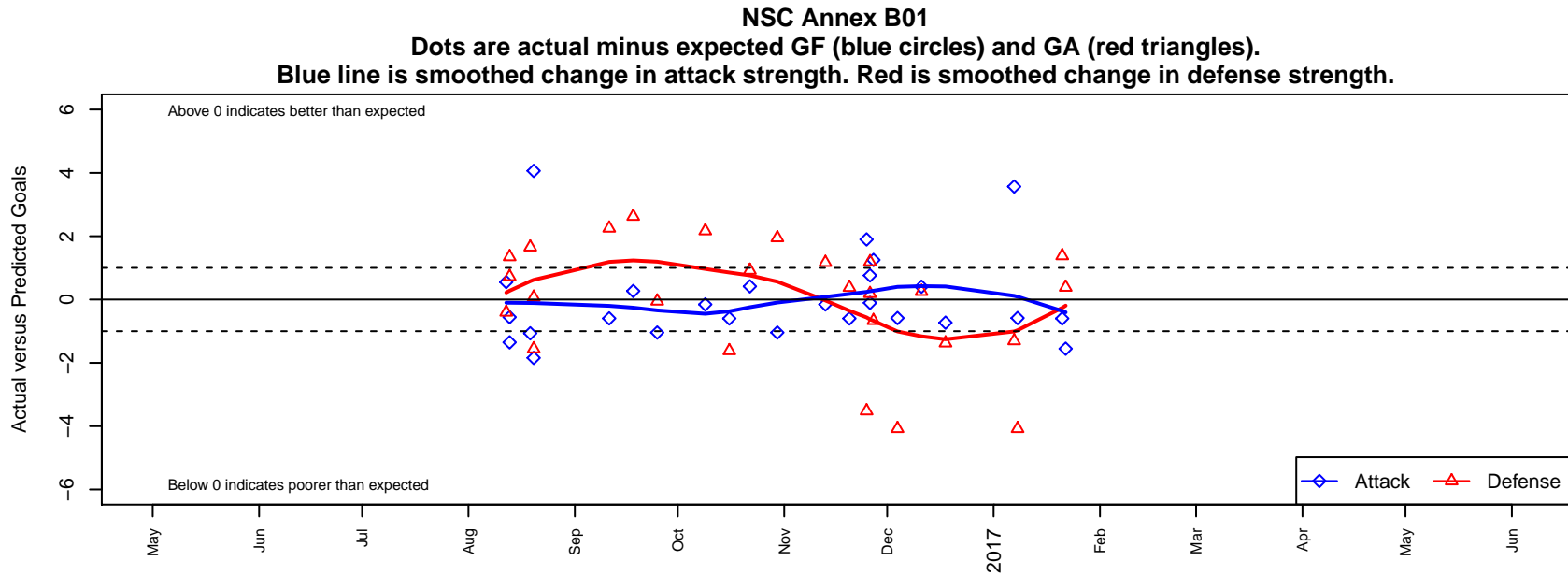


NSC Annex B01

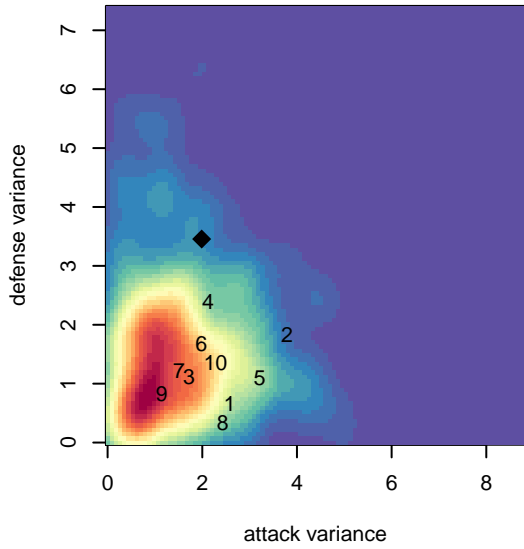
Northshore SC
 Woodinville, WA
 B01 total strength=1136
 attack=3.98 defense=2.58
 fall league = NPSL Div 1 (01) U16

alt names used:
 NSC B01 Annex
 NORTSHORE SELECT NSC B01 ANNEX (W
 NSC B01 ANNEX
 NSC 01 Annex
 NSC Annex B01 Green

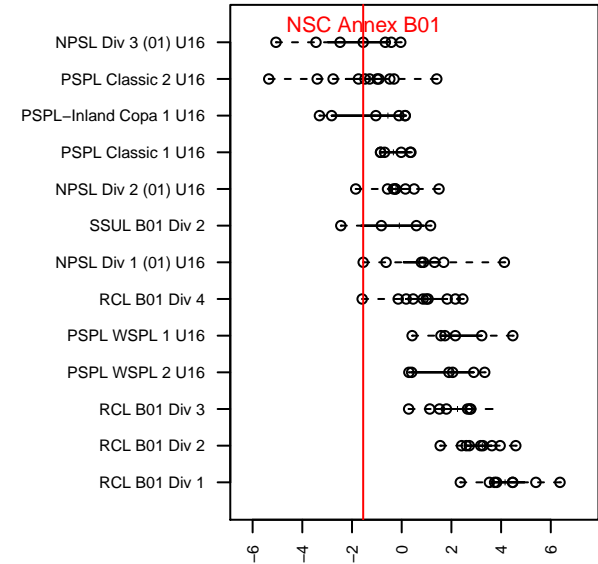
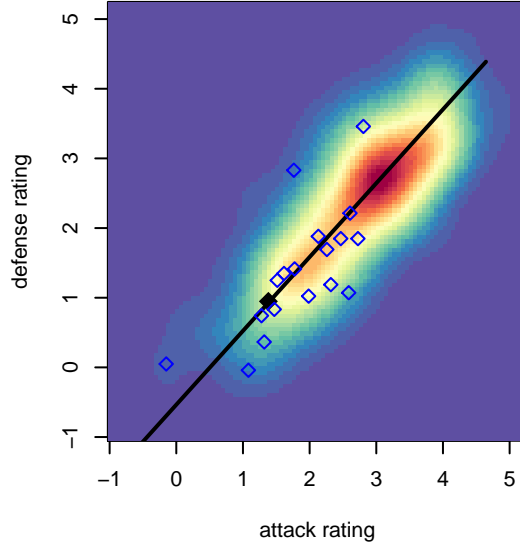
Venues played:
 2016 REDAPT Cup Silver U16
 2016 Xtreme Cup BU16 Silver
 2016 NPSL Division 1 (01) U16
 2016 Cranberry Cup U15-16
 2016 Founders Cup B01 Div A



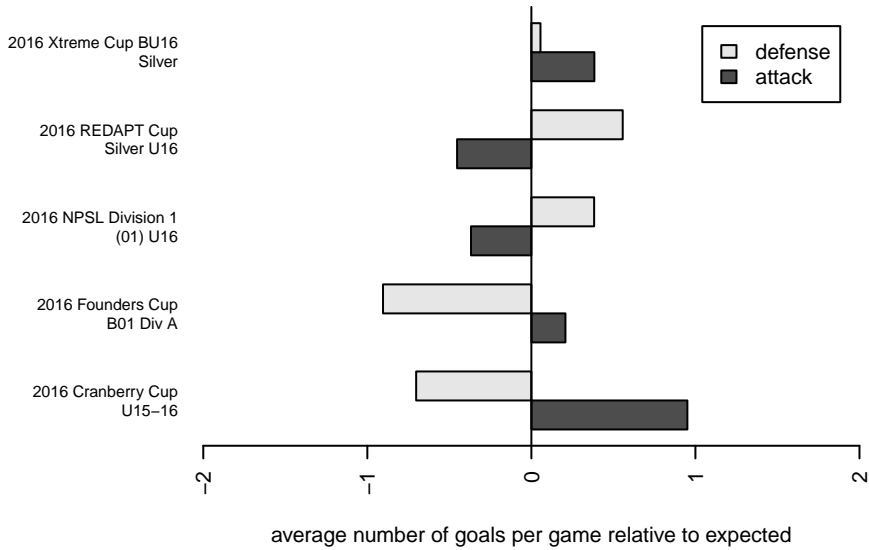
**attack and defense variance (black dot)
relative to other teams
and top 10 in region**



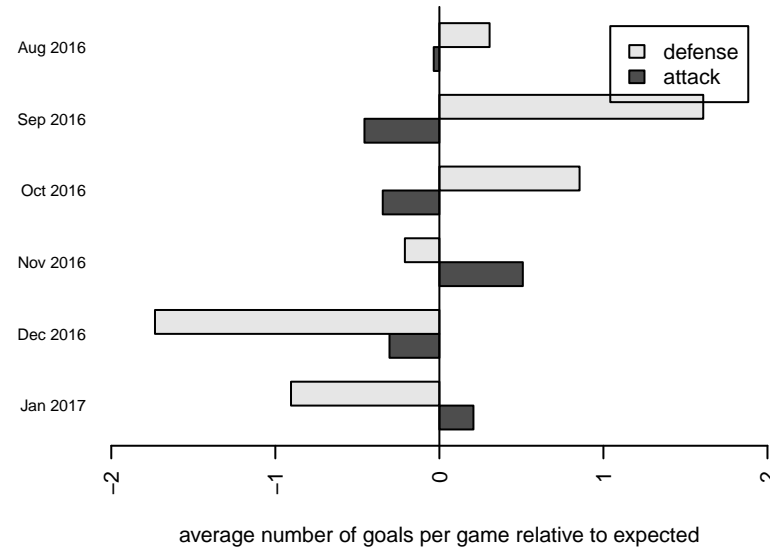
**attack and defense rating
relative to others at age
and all opponents in last 13 months**



Performance relative to 13 month average



Performance relative to 13 month average



| date | home | | away | | venue | pred.home | pred.away |
|-------------|--------------------------------|---|--------------------------------|---|-------------------------------|------------------|------------------|
| 2017-01-22 | NSC Annex B01 | 2 | IFC Red B01 | 0 | 2016 Founders Cup B01 Div A | 3.55 | 0.39 |
| 2017-01-21 | Seattle United S Blue B01 | 2 | NSC Annex B01 | 0 | 2016 Founders Cup B01 Div A | 3.38 | 0.60 |
| 2017-01-08 | Crossfire Select Taylor B01 | 8 | NSC Annex B01 | 0 | 2016 Founders Cup B01 Div A | 3.92 | 0.59 |
| 2017-01-07 | NSC Annex B01 | 5 | Newport FC Barca B01 | 4 | 2016 Founders Cup B01 Div A | 1.43 | 2.69 |
| 2016-12-18 | NSC Annex B01 | 0 | Storm King B01 | 5 | 2016 NPSL Division 1 (01) U16 | 0.73 | 3.62 |
| 2016-12-11 | STU Evolution Black B01 | 5 | NSC Annex B01 | 1 | 2016 NPSL Division 1 (01) U16 | 5.25 | 0.60 |
| 2016-12-04 | Crossfire Select Taylor B01 | 8 | NSC Annex B01 | 0 | 2016 NPSL Division 1 (01) U16 | 3.92 | 0.59 |
| 2016-11-27 | NSC Force B02 | 2 | NSC Annex B01 | 3 | 2016 Cranberry Cup U15-16 | 1.33 | 1.75 |
| 2016-11-26 | Fuerza FC Academy B01 | 2 | NSC Annex B01 | 1 | 2016 Cranberry Cup U15-16 | 2.19 | 1.11 |
| 2016-11-26 | NSC Annex B01 | 1 | MBSOS FC B01 | 1 | 2016 Cranberry Cup U15-16 | 0.24 | 2.19 |
| 2016-11-25 | NSC Annex B01 | 3 | NSC Green Wave B01 | 7 | 2016 Cranberry Cup U15-16 | 1.10 | 3.48 |
| 2016-11-20 | NSC Annex B01 | 0 | Seattle United S Blue B01 | 3 | 2016 NPSL Division 1 (01) U16 | 0.60 | 3.38 |
| 2016-11-13 | NSC Annex B01 | 0 | Crossfire Select Greenwalt B01 | 5 | 2016 NPSL Division 1 (01) U16 | 0.15 | 6.17 |
| 2016-10-30 | NSC Annex B01 | 0 | FWFC Select B01 | 0 | 2016 NPSL Division 1 (01) U16 | 1.04 | 1.95 |
| 2016-10-22 | NSC Annex B01 | 1 | Crossfire Select Taylor B01 | 3 | 2016 NPSL Division 1 (01) U16 | 0.59 | 3.92 |
| 2016-10-16 | Seattle United S Blue B01 | 5 | NSC Annex B01 | 0 | 2016 NPSL Division 1 (01) U16 | 3.38 | 0.60 |
| 2016-10-09 | Crossfire Select Greenwalt B01 | 4 | NSC Annex B01 | 0 | 2016 NPSL Division 1 (01) U16 | 6.17 | 0.15 |
| 2016-09-25 | FWFC Select B01 | 2 | NSC Annex B01 | 0 | 2016 NPSL Division 1 (01) U16 | 1.95 | 1.04 |
| 2016-09-18 | Storm King B01 | 1 | NSC Annex B01 | 1 | 2016 NPSL Division 1 (01) U16 | 3.62 | 0.73 |
| 2016-09-11 | NSC Annex B01 | 0 | STU Evolution Black B01 | 3 | 2016 NPSL Division 1 (01) U16 | 0.60 | 5.25 |
| 2016-08-20 | WPFC Gold B01 | 3 | NSC Annex B01 | 0 | 2016 Xtreme Cup BU16 Silver | 1.44 | 1.84 |
| 2016-08-20 | Edmond Premier Titans B01 | 1 | NSC Annex B01 | 8 | 2016 Xtreme Cup BU16 Silver | 1.07 | 3.94 |
| 2016-08-19 | NSC Annex B01 | 0 | Seattle Celtic Green B01 | 0 | 2016 Xtreme Cup BU16 Silver | 1.07 | 1.66 |
| 2016-08-13 | NSC Annex B01 | 0 | FC Edmonds Riptide B01 | 4 | 2016 REDAPT Cup Silver U16 | 1.35 | 4.72 |
| 2016-08-13 | Snohomish United White B01 | 0 | NSC Annex B01 | 2 | 2016 REDAPT Cup Silver U16 | 1.35 | 2.56 |
| 2016-08-12 | NSC Annex B01 | 1 | Eclipse FC B01 | 5 | 2016 REDAPT Cup Silver U16 | 0.45 | 4.60 |